

Media Release

Global air traffic sees softer contraction in July

Asia Pacific reports strong domestic market growth

GENEVA, 02 September 2009 – Global passenger traffic in July 2009 showed positive signs of stabilisation, according to the ACI *PaxFlash* report. ACI World Director General Angela Gittens comments, "This is a scenario where we can draw optimism from a negative. Although overall traffic is still lower than 2008, the gap is narrowing significantly. Total traffic worldwide was down by 1.2 percent in July, but reflects a rising growth trend when compared to declines of 5 percent in June and 8 percent in May. It may still be too soon to assume the worst is over, but results in a few key markets are most encouraging. "

Three regions – Asia Pacific, Latin America & Caribbean and Middle East – recorded overall growth in July, a first for this year. Also for the first time this year, domestic traffic worldwide for July grew by 0.9 percent, driven by excellent results in the Asia Pacific region (+10.1%) and Latin America & Caribbean (+ 9.5 %). Although total international traffic remained depressed (-3.4 %) compared to July 2008, this is a marked improvement over the 7 percent decline recorded in June 2009 – June 2008 comparison. The Middle East and Africa regions both report positive international growth (respectively 11.6 and 0.7 percent increases). Please see summary Table 1 and the regional breakdown for passenger results provided in Table 2.

The ACI *FreightFlash* report similarly reflects this rising traffic trend. Although results are still below 2008 figures, the steep downward spiral of the first quarters has ceased. Worldwide global freight traffic was down by 8.7 percent in July 2009 over July 2008, but is a notable improvement

compared to the year to date results for January-July (-17.2 %) or for the past 12 months (-14.7%) as shown in the Summary Table below. For international freight, the Middle East region saw positive growth at a 3.5 percent increase. For domestic traffic, only Asia Pacific reported strong results (+12.1%), due in large part due to activity at Chinese airports. North America's results were down by 3.5 percent, yet equally an improvement over previous months. European and Latin American freight results remain more seriously depressed. See Table 3 for month over month, year to date and rolling 12-month year results for the regions.

| TABLE 1: SUMMARY WORLDWIDE TRAFFIC RESULTS, JULY 2009 (% CHANGE) | | | |
|--|-----------------------------|--------------------------------------|---|
| | July 2009 over July 2008 | YTD Jan - July 2009 Over YTD 2008 | Rolling 12 months, through July 2009 |
| <i>PaxFlash</i> | | | |
| International passenger | (3.4) | (7.2) | (5.4) |
| Domestic passenger | 0.9 | (4.7) | (5.2) |
| Total passenger | (1.2) | (5.9) | (5.3) |
| <i>FreightFlash</i> | | | |
| International freight | (11.3) | (20.2) | (16.7) |
| Domestic freight | (3.6) | (10.4) | (10.1) |
| Total freight | (8.7) | (17.2) | (14.7) |

Notes for editors

1. ACI, the only worldwide association of airports, is a non-profit organisation whose prime purpose is to represent the interests of airports and to promote professional excellence in airport management and operations. ACI has 597 members who operate over 1679 airports in 177 countries and territories.
2. *PaxFlash* and *FreightFlash* statistics are based on a significant sample of airports that provide regular monthly reports to ACI. They represent approximately 60% of total passenger traffic and 70% of total freight traffic worldwide. Commentary, tables and charts are based on data submitted by participating airports.
3. For queries concerning the statistics, please contact Nancy Gautier, Director Communications ACI World, Geneva Switzerland, email ngautier@aci.aero

TABLE 2: PaxFlash Summary – July 2009

| Regions | July 2009 | % YOY | YTD July 2009 | % YOY | YE July 2009 | % YOY |
|---------------------------------|----------------|--------------|------------------|--------------|------------------|--------------|
| International Passengers | | | | | | |
| AFR | 6 595 | 0.7 | 36 200 | (3.8) | 65 277 | (0.3) |
| ASP | 28 002 | (3.5) | 181 250 | (8.6) | 315 043 | (8.1) |
| EUR | 73 419 | (3.7) | 400 339 | (7.8) | 709 590 | (5.7) |
| LAC | 5 242 | (14.7) | 36 054 | (10.9) | 61 509 | (6.6) |
| MEA | 9 069 | 11.6 | 51 133 | 5.3 | 87 290 | 6.7 |
| NAM | 16 113 | (6.1) | 96 533 | (8.1) | 165 975 | (5.7) |
| ACI | 138 441 | (3.4) | 801 509 | (7.2) | 1 404 684 | (5.4) |
| Domestic Passengers | | | | | | |
| AFR | 2 663 | (6.1) | 18 117 | (11.5) | 32 271 | (10.2) |
| ASP | 43 328 | 10.1 | 278 053 | 4.5 | 472 673 | 2.2 |
| EUR | 18 194 | (3.9) | 111 108 | (10.5) | 194 072 | (10.1) |
| LAC | 14 108 | 9.5 | 83 003 | (2.5) | 139 811 | (3.0) |
| MEA | n/a | | | | | |
| NAM | 85 017 | (3.3) | 517 061 | (7.9) | 886 516 | (7.8) |
| ACI | 163 311 | 0.9 | 1 007 342 | (4.7) | 1 725 343 | (5.2) |
| Total Passengers | | | | | | |
| AFR | 9 345 | (1.4) | 54 887 | (6.6) | 98 561 | (3.9) |
| ASP | 72 498 | 4.2 | 466 724 | (1.1) | 800 252 | (2.2) |
| EUR | 91 895 | (3.8) | 513 230 | (8.4) | 908 128 | (6.7) |
| LAC | 20 007 | 1.5 | 123 267 | (5.2) | 208 519 | (4.2) |
| MEA | 9 397 | 11.0 | 53 506 | 4.7 | 91 445 | 6.2 |
| NAM | 101 233 | (3.9) | 614 424 | (8.1) | 1 054 476 | (7.6) |
| ACI | 304 374 | (1.2) | 1 826 038 | (5.9) | 3 161 382 | (5.3) |

Traffic table definitions:

PASSENGER TRAFFIC: departing + arriving passengers (000s)

INTERNATIONAL: traffic performed between the designated airport and an airport in another country/territory

DOMESTIC: traffic performed between two airport located in the same country/territory

TOTAL: international + domestic passengers + direct transit passengers counted once (when breakdown is available)

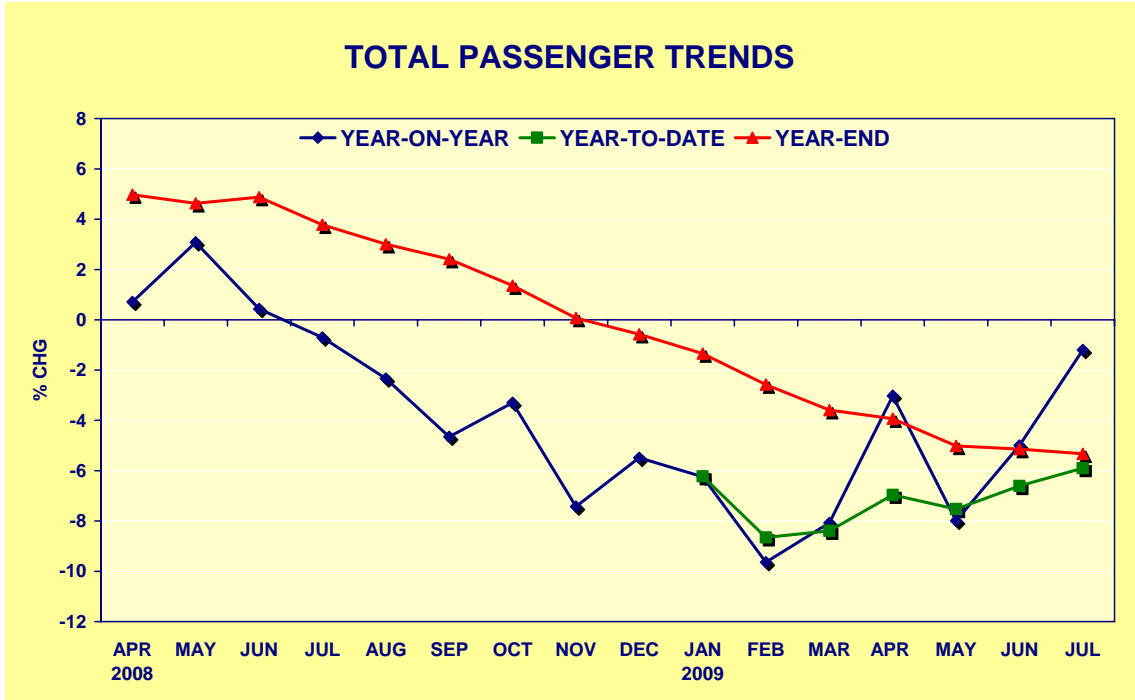
YOY Year over year same month comparison;

YTD Year to date, starting January 2009, compared to same period previous year

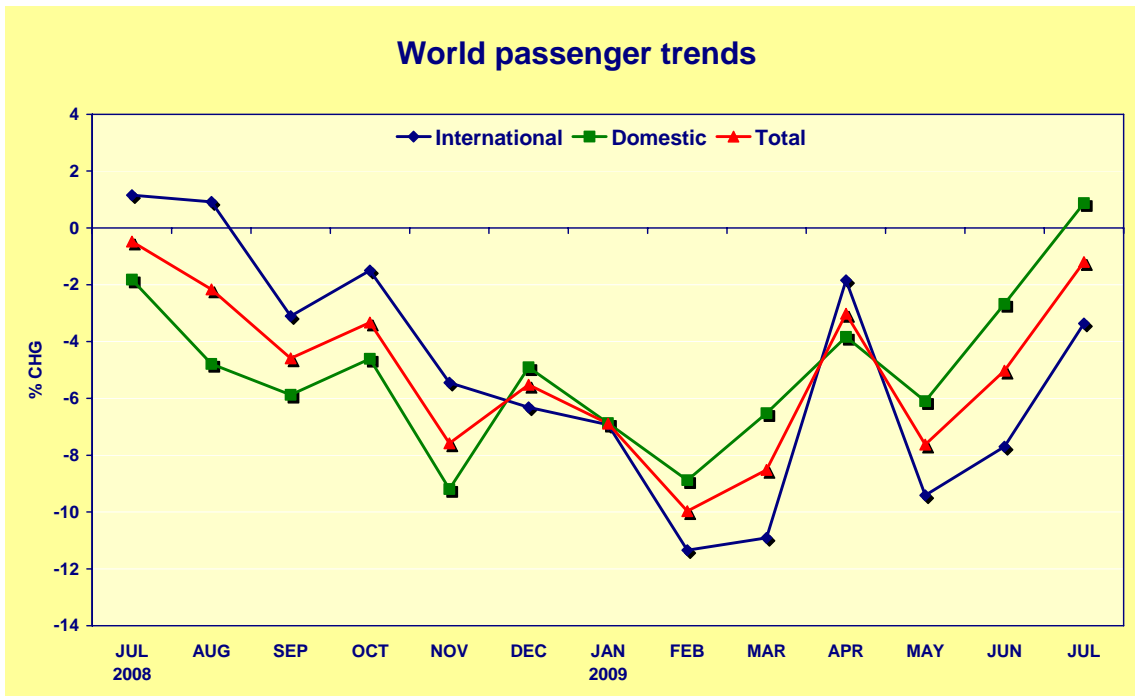
YE Year end, based on rolling 12 month period, compared to same prior 12 month period

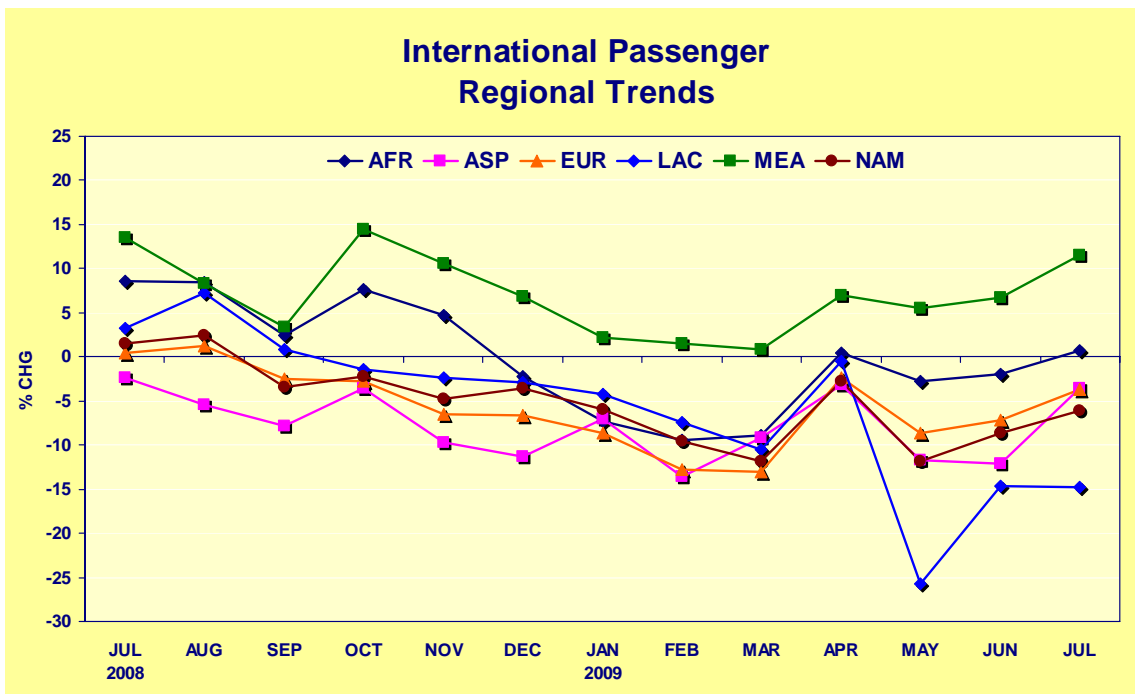
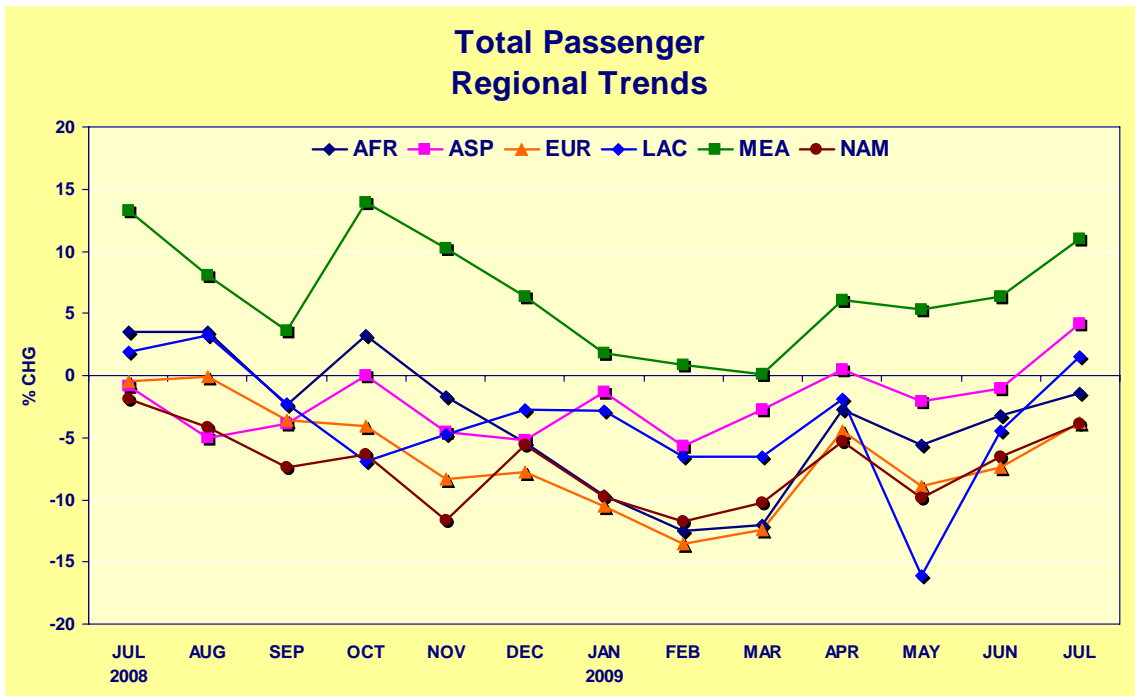
| | | |
|---|--|----------------------------|
| AFR – Africa | EUR – Europe | MEA – Middle East |
| ASP – Asia Pacific (including India) | LAC – Latin America and Caribbean | NAM – North America |

Graphic representation of Table 2 (passenger traffic YOY, YTD, YE)



Month over month (YOY) passenger traffic comparison





more...

TABLE 3: FreightFlash Summary – July 2009

| Regions | July 2009 | % YOY | YTD July 2009 | % YOY | YE July 2009 | % YOY |
|------------------------------|----------------|---------------|-----------------|---------------|-----------------|---------------|
| International Freight | | | | | | |
| AFR | 53.4 | (10.0) | 370.6 | (13.6) | 665.3 | (11.8) |
| ASP | 1 277.7 | (10.4) | 7 801.6 | (20.5) | 14 270.7 | (17.7) |
| EUR | 794.2 | (12.4) | 5 050.6 | (22.0) | 9 342.5 | (17.5) |
| LAC | 127.8 | (17.4) | 803.2 | (24.8) | 1 537.3 | (19.0) |
| MEA | 281.4 | 3.5 | 1 777.2 | (0.7) | 3 118.7 | 1.4 |
| NAM | 445.0 | (17.5) | 2 921.5 | (24.8) | 5 438.7 | (20.7) |
| ACI | 2 979.7 | (11.3) | 18 724.7 | (20.2) | 34 373.2 | (16.7) |
| Domestic Freight | | | | | | |
| AFR | n/a | | | | | |
| ASP | 430.8 | 12.1 | 2 655.0 | (0.4) | 4 601.7 | (1.1) |
| EUR | 32.1 | (16.8) | 216.2 | (15.8) | 403.9 | (11.1) |
| LAC | 64.6 | (19.2) | 477.7 | (14.1) | 898.9 | (8.9) |
| MEA | n/a | | | | | |
| NAM | 835.2 | (8.3) | 5 595.2 | (13.9) | 10 002.5 | (13.8) |
| ACI | 1 362.8 | (3.6) | 8 944.0 | (10.4) | 15 907.0 | (10.1) |
| Total Freight | | | | | | |
| AFR | 60.8 | (8.1) | 419.3 | (12.7) | 747.1 | (11.5) |
| ASP | 1 708.8 | (5.6) | 10 457.8 | (16.3) | 18 875.3 | (14.2) |
| EUR | 826.3 | (12.6) | 5 267.3 | (21.7) | 9 747.5 | (17.3) |
| LAC | 192.5 | (18.0) | 1 280.9 | (21.2) | 2 436.3 | (15.5) |
| MEA | 281.5 | 3.5 | 1 777.9 | (0.7) | 3 119.8 | 1.4 |
| NAM | 1 336.2 | (10.9) | 8 798.6 | (17.9) | 15 944.5 | (16.4) |
| ACI | 4 406.2 | (8.7) | 28 001.9 | (17.2) | 50 870.5 | (14.7) |

Traffic table definitions:

FREIGHT TRAFFIC: loaded and unloaded freight; data in metric tonnes

INTERNATIONAL: traffic performed between the designated airport and an airport in another country/territory

DOMESTIC: traffic performed between two airports located in the same country/territory

TOTAL: international + domestic freight (when breakdown is available)

Note: No domestic freight traffic is reported by airports in the Middle East region. The July responses for domestic freight in Africa were insufficient to determine growth percentages.

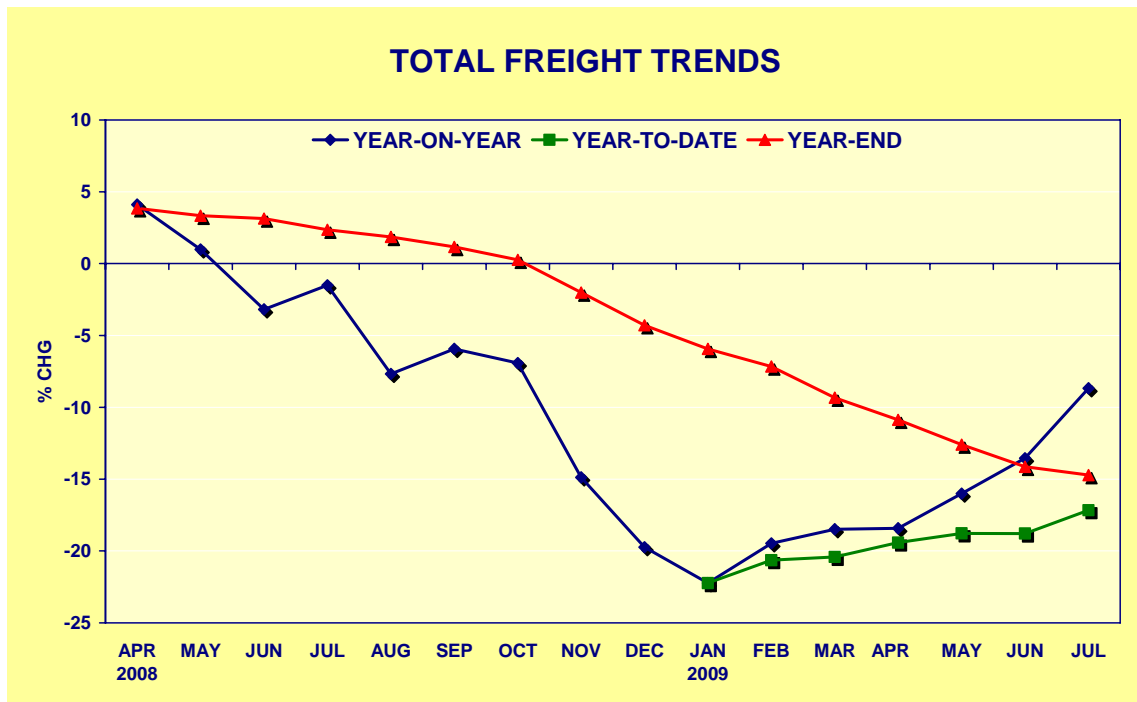
YOY Year over year same month comparison;

YTD Year to date, starting January 2009, compared to same period previous year

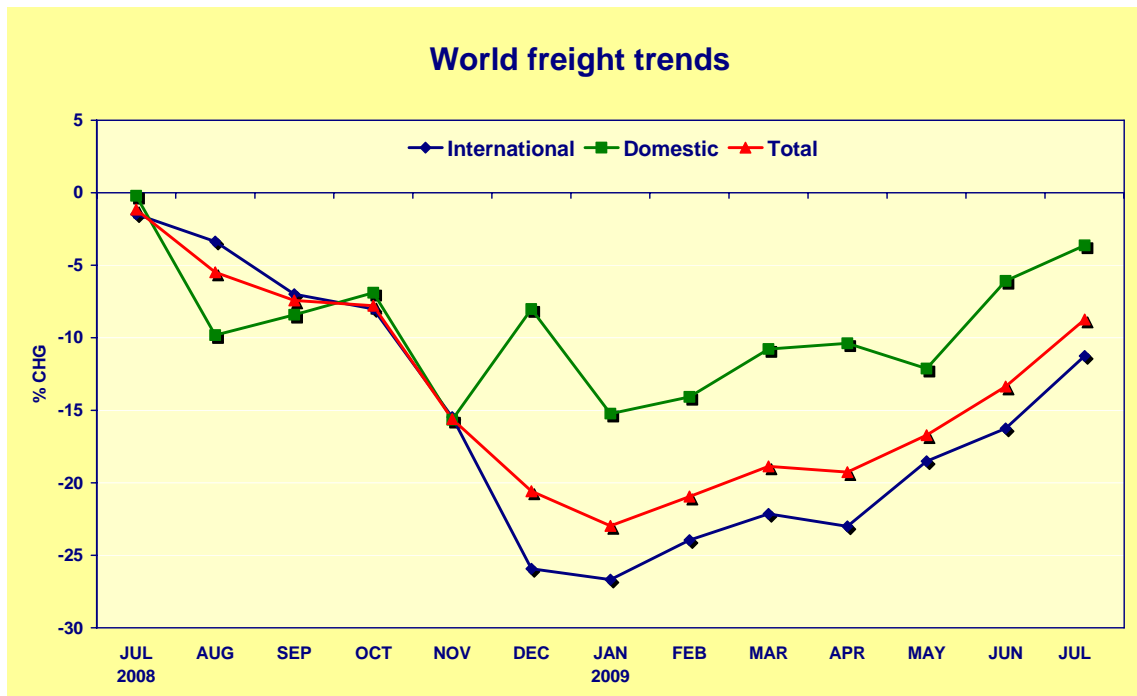
YE Year end, based on rolling 12 month period, compared to same prior 12 month period

| | | |
|---|--|----------------------------|
| AFR – Africa | EUR – Europe | MEA – Middle East |
| ASP – Asia Pacific (including India) | LAC – Latin America and Caribbean | NAM – North America |

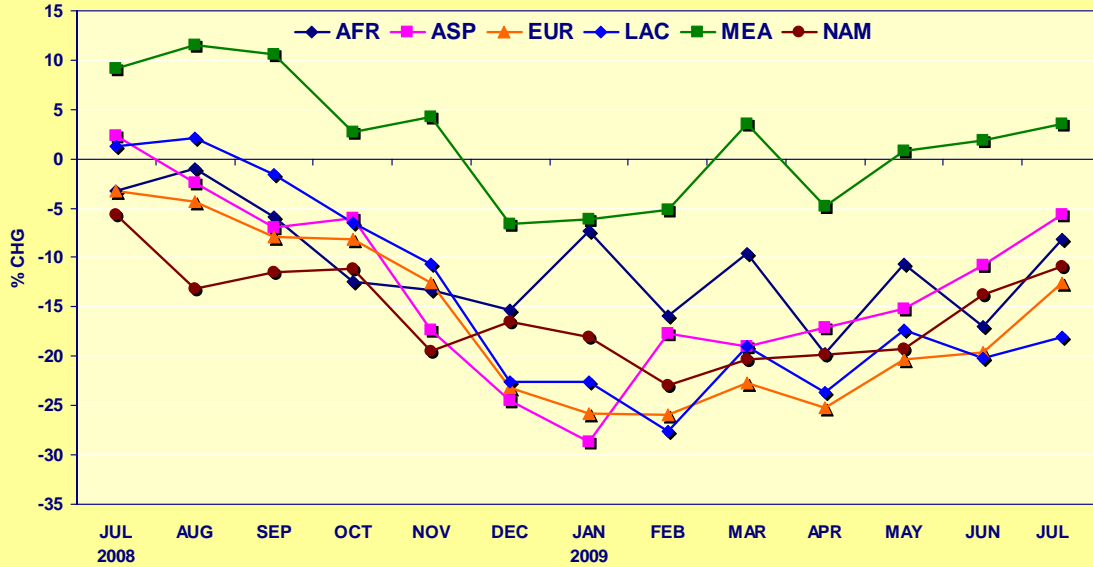
Graphic representation of Table 3 (freight traffic YOY, YTD, YE)



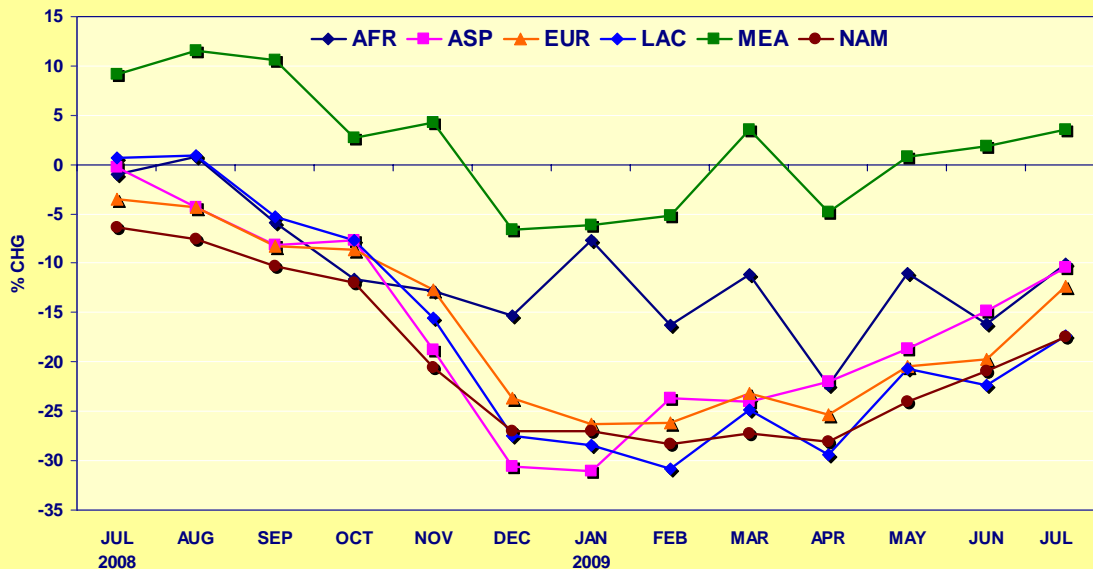
Month over month (YOY) passenger traffic comparison



Total Freight Regional Trends



International Freight Regional Trends



- END -