



CENTERLINES FINANCE

Airport Financial Benchmarking Analysis Tool

Desktop Version

THE
VOICE
OF
AIRPORTS®

May, 2017



OVERVIEW

Centerlines Finance is an airport financial benchmarking analysis tool that allows airport professionals to compare up to 90 different data elements between nearly 100 airports.

The analysis toolset utilizes the past six years of the ACI-NA Annual Financial Benchmarking Survey data, and is a subscription service available only to airport survey participants.

This desktop toolset allows the downloading of raw data and trending graphs.

KEY PERFORMANCE INDICATORS

- Airport Code
- Airport Name
- Airport Size
- Calendar Year
- Landing Fees - Domestic
- Landing Fees - International
- Landing Fees - Cargo
- Total Landing Fees
- Terminal Rental, Utilities & Other Fees
- FIS Fees
- Total Terminal Area Fees
- Total Other Aeronautical Revenue
- Total Aeronautical Revenue
- Total Passenger Airline Revenue
- Concessions - Food And Bev
- Concessions Retail
- Concessions Duty Free
- Concessions - Services & Other
- Total Concessions Revenue
- Rental Car Revenues
- On Airport Parking And Valet Revenues
- Ground Transportation Fees
- Off Airport Valet and Parking
- Total Parking & Ground Trans Revs
- Hotel Revenues (income to Airport)
- Ground Rents/Facilities Leases
- Utilities Revenue
- Total Other Non Aero Ops Revs
- Total Non Aero Ops Rev
- Total Operating Revenue
- Personnel Compensation And Benefits
- Service Contracts
- Materials, Equipment & Supplies
- Utilities And Communications
- Insurance, Claims & Settlements
- General & Admin Expenses
- Canada Lease Rent
- Other Operating Expenses
- Total Operating Expenses
- Depreciation
- Net Operating Income (Loss)
- Grant Receipts
- PFC/AIF (Canada)
- Rental Car CFC
- Interest Expense
- Total Non-Ops Rev and Exp, Net
- Net Income (Loss)/Change In Assets
- Unrestricted Cash And Investments
- Restricted Cash And Investments
- Capital Expenditures
- FTEs
- Law Enforcement FTEs
- Domestic Passengers
- International Passengers
- Landed Weights
- Signatory Landing Fee Rate
- Aircraft Operations
- Debt Outstanding
- Debt Service
- Concessions - Gross Sales
- Concessions - Income Per Enplanement
- Concessions - Sales Per Enplanement
- Rental Car - Gross Sales
- Signatory Landing Fee Rate 1000lb
- Annual Aircraft Operations
- CPE

CENTERLINES FINANCE TOOLSET FEATURES



Compare

your performance
with other peer
airports



Improve

airport performance
and contribute to
the bottom line



Evaluate and Locate

hidden
opportunities

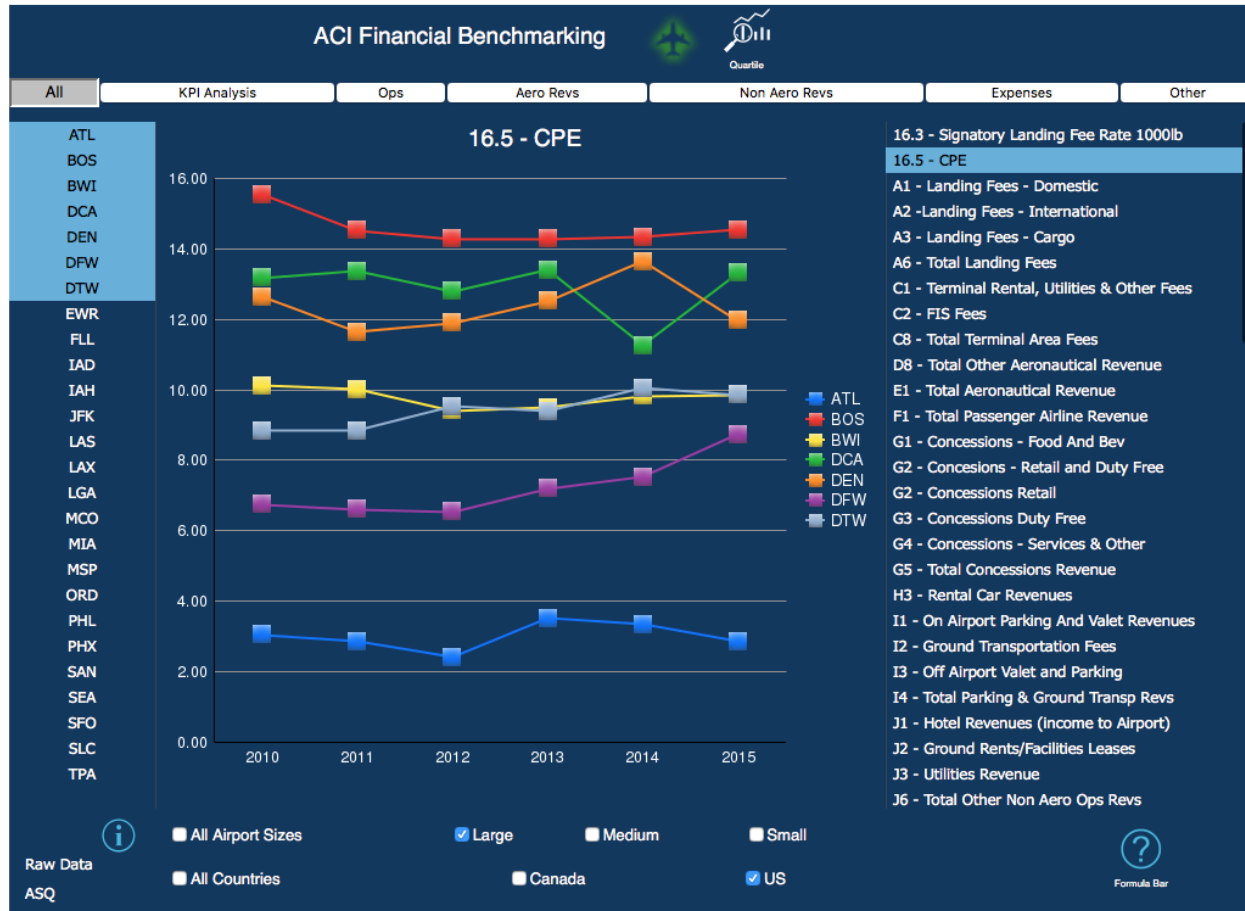


Download

raw results from
all participating
airports

- Over 100 North America Airports participate in the ACI-NA Annual Financial Benchmarking Survey
- Download the raw data from six years – Excel format
- Trending graphic from peer airports
- Webinar Tutorial – Centerlines Finance

CENTERLINES FINANCE TOOLSET SCREENSHOT



CENTERLINES FINANCE RAW DATA



	A	B	C	D	E	F	G	H	I	J	K	L	M	N	O	P	Q	R	S	T
1 Survey Page		Strt of Revs Exps																		
2 Hub Size		L																		
3																				
4 Sum of ACI Response		Column Labels																		
5 Row Labels		ATL	BOS	BWI	CLT	DCA	DEN	DFW	DTW	EWB	FLL	IAD	IAH	JFK	LAS	LAX	LGA	MCO	MIA	MSP
6 A1 - Domestic Passenger Airline Landing Fees																				
7 A2 - Int'l Passenger Airline Landing Fees																				
8 A3 - Cargo (Non-Passenger) Airline Landing Fees																				
9 A4 - Military Landing Fees (includes joint-use fees)																				
10 A5 - General Aviation Fees																				
11 A6 - Total Landing Fees																				
12 C1 - Terminal Area Rentals, Utilities & Other Fees																				
13 C2 - Federal Inspection System(Int'l) Fees																				
14 C3 - Terminal Area Apron & Tie Down Fees																				
15 C4 - Baggage System Fees (revenues, no expenses)																				
16 C5 - Automated People Mover Intra-terminals Fees																				
17 C6 - Security Reimbursements from Airlines																				
18 C7 - Other Terminal Area Fees																				
19 C8 - Total Terminal Area Passenger Airline Fees																				
20 D1 - FBO Revenue: Contract or Sponsor Operated																				
21 D1a - FBO Revenue: Contract or Sponsor Operated (non-fuel sales related)																				
22 D1b - FBO Revenue: Sales of Fuel and Related Revenue																				
23 D2 - Hangar & Cargo Rentals & Ground Leases																				
24 D3 - Aviation Fuel Tax Retained for Airport Use																				
25 D4 - Fuel Sales Net Profit (Loss) or Fuel Flowage Fees																				
26 D5 - Security Reimbursements from Fed. Govt																				
27 D6 - General Aviation Miscellaneous Fees (excludes landing fees AS)																				
28 D7 - Other																				
29 D8 - Total Other Aeronautical Revenue																				
30 E1 - Total Aeronautical Revenue (A6+C8+D7)																				
31 F1 - Total Passenger Airline Revenue (A1 +A2+C8)																				
32 G1 - Terminal Concessions Revenues-Food and Beverage																				
33 G2 - Terminal Concessions Revenues-Retail																				
34 G3 - Terminal Concessions Revenues-Duty Free																				
35 G4 - Terminal Concessions Revenues-Services and Other Terminal Concessions																				
36 G5 - Total Terminal Concession Revenue																				
37 H1 - On-Airport Rental Car Revenues to Airport																				
38 H2 - Off Airport Rental Car Revenues to Airport																				
39 H3 - Total Rental Car Revenues																				
40 I1 - On Airport Parking and Valet Revenues																				
41 I2 - TOTAL Ground Transportation Fees																				
42 I2a - Ground Transportation Fees (Taxis)																				
43 I2b - Ground Transportation Fees (TNCs e.g. Uber/Lyft)																				
44 I2c - Ground Transportation Fees (Others e.g. limos and shuttles)																				
45 I3 - Off Airport Parking/Valet Access Fees to Airport																				
46 I4 - Total Public Parking & Ground Transportation Revenues																				
47 J1 - Hotel Revenues (Income to Airport)																				
48 J2 - Ground Rents/Facilities Leases (excludes aeronautical & car rental)																				
49 J3 - Utilities Revenues (excludes aeronautical & car rental)																				
50 J4 - Other (Sale of Motorvehicle & Specs, Deling, Acc't Penalties, Etc.)																				

THE
VOICE
OF
AIRPORTS®



CENTERLINES FINANCE
AIRPORT FINANCIAL BENCHMARKING ANALYSIS TOOL
WWW.ACI-NA.ORG/CENTERLINES-FINANCE